

Get cash instantly, \$50 refer-a-friend bonus, and more!

¿Quieres recibir su boletín mensual de GTE en español? [Haga clic aquí para seleccionar su idioma preferido.](#)



MARCH 2022



No Down Payment? No Problem!

GTE offers **zero-down home loans**¹ to help turn your home goals into a reality! Meet with a [GTE Loan Executive](#) to discuss your options.

[LEARN MORE](#)

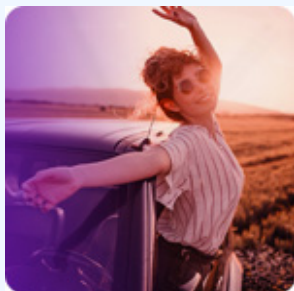


\$50 For You, \$50 For Them

Refer a friend to GTE and **you both get paid \$50.**² Plus, there's no limit to how many members you can refer!

Your unique referral code is: **[--Merge2--]**

[LEARN MORE](#)



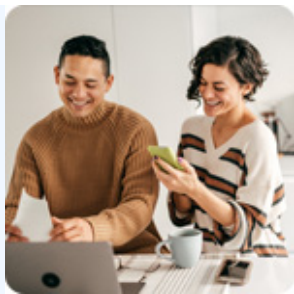
Refinance Your Auto Loan, Get \$100

For a limited time, enjoy a **\$100**³ bonus when you **refinance** your external auto, RV, or boat loan with GTE.

[LEARN MORE](#)

Get Cash Instantly!

We're excited to announce [GTE Instant Cash](#) - a new way for our members to take out **small cash loans** in times of need or when unexpected expenses happen.



[LEARN MORE](#)



It's tax time!

[GTE Investment Group](#) is here to help you with tax-smart investing, so you can **keep more of what you've worked hard for!**

[LEARN MORE](#)



 **instantly easy**

The Easy Way To Bill Pay!

Manage and pay your bills in the GTE Mobile app, and never miss a payment.

[LEARN MORE](#)

March Webinars

Retirement Income Planning

Learn how to plan for your retirement lifestyle, how to estimate the amount of money you'll need in retirement, and more!

Tuesday, March 22

12:00pm - 1:00pm
or 5:00pm - 6:00pm

Wednesday, March 23

12:00pm - 1:00pm
or 5:00pm - 6:00pm

Thursday, March 24

5:00pm - 6:00pm

[REGISTER FOR FINANCIAL WORKSHOPS](#)



March Charity of the Month

The journey back to health after a spinal cord injury is extremely difficult. Tighten the Drag Foundation helps injury victims recover through aggressive rehabilitation and activity-based exercise and recreational outings.

[LEARN MORE](#)

Thanks for being a member of GTE!

1. No down payment is due at closing. Interest rates are based on creditworthiness, amount financed and ability to repay. Rates can vary based on risk factors which include but are not limited to LTV, credit score, and debt to income ratio. Offer valid on Primary Residence loans only. Property Insurance Required. Payments do not include applicable property taxes, property insurance and mortgage insurance. There are no balloon payments required. Membership eligibility is required. Please speak with a Loan Executive for additional information about our rates and fees. Rates are subject to change without notice. Your actual rate and/or points may be different, as many factors are evaluated for a loan approval. This product is subject to change or cancellation at any time without prior notice. All loans are subject to approval.
2. Member Accounts must be active in order to receive a referral payment. Both Members must be enrolled in eStatements with all accounts in good standing, including no prior charged-off accounts. The primary owner of the new account must be at least 18 years old. The new Member must fund the Regular Share account and open either a checking account or personal loan within 30 days of establishing membership. Regular Share Account APY as of 01.12.2020 is \$0.01-\$99.99 = 0.00%, and \$100+ = 0.05%. Rates are subject to change, and fees may reduce earnings. APY is accurate as of the last dividend declaration date. APY = Annual Percentage Yield. A \$50 referral reward will be deposited into the referring member's account and new member's account after these requirements have cleared. After all the above requirements are met then the referral bonus will be deposited into your account within 7 business days. The new Member must not have been a GTE Member for more than 60 days and must be in good standing with GTE Financial. The promotion is available for referrals made between February 1, 2022 and March 31, 2022.
3. Loan must be applied for and funded by March 31, 2022. Offer not eligible for loans already financed with GTE Financial. Loan must be at least \$10,000 to qualify for the \$100 incentive. Loan approval, APR, and down payment required are based on payment method, creditworthiness, collateral, and ability to repay. Rates, terms, and conditions are subject to change. Multiple incentive offers cannot be used on the same loan.

©2022 GTE Financial Credit Union. All Rights Reserved. This email was sent to you by GTE Financial Credit Union located at 711 E. Henderson Ave., Tampa, FL 33602.



To manage your email subscriptions please go [here](#).
If you no longer wish to receive emails from us please go [here](#).